



# ELECTRIC CHOICE BASICS

[www.pluginillinois.org](http://www.pluginillinois.org)

## What is Electric Choice?

The actual electricity you use is the **supply**. You can choose which company **supplies** your electricity.

ComEd and Ameren Illinois own the wires that **deliver** electricity to you. You cannot choose another **delivery** company.

## How will Choosing a Supplier affect my Service?

ComEd and Ameren Illinois do not profit from electric supply. There is no financial incentive for the utility to supply your electricity and your service will not be affected in any way if you choose a different supplier.

Whether you choose a new **supplier** or not, ComEd or Ameren Illinois will continue to **deliver** electricity to you. You still call them for outages and safety issues involving the electric service.

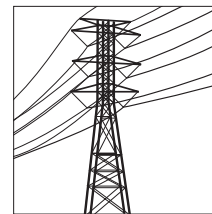
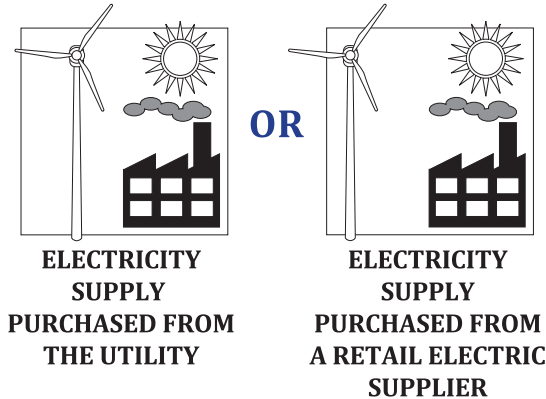
## How do I Choose a Supplier?

If you want to shop for your own supplier, or if a supplier contacts you, you should **completely review all the terms** of the offer and decide if the offer is right for you **before** providing any of your information, including your ComEd or Ameren Illinois account number.

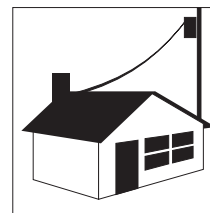
Important information to consider includes: how you will be billed, the electric supply **rate** (price), length of **time** for the contract (term), **renewal** policy and whether you have to pay any **penalty** or **fee** for ending the contract early (termination fee). Some customers may also be interested in whether the source of a supplier's electricity is renewable or "green."

For help on how to choose, please visit [www.pluginillinois.org](http://www.pluginillinois.org) or call the Illinois Commerce Commission at **800-524-0795**.

## CUSTOMERS MAY CHOOSE:



**ELECTRICITY IS DELIVERED BY THE UTILITY**



**TO THE CUSTOMER**

## Should I Choose a Different Supplier?

You may choose a retail electric supplier, but it is not required. It is possible, but **not guaranteed**, that you could save money by choosing your own **supplier** or having one chosen for you by your city. Some customers also prefer "green" or renewable energy offers.

## Can my City Choose a Supplier for Me?

Local governments can choose a supplier for their citizens to try to save them money through "aggregation." **Aggregation** works by combining the buying power of all customers in a city so a potentially better rate can be obtained from a supplier.

If a city chooses aggregation by a **referendum of the voters**, then citizens are **enrolled automatically**. Citizens may **opt out** or **choose a different supplier** if they do not want the city's choice. If a city chooses aggregation **without a voter referendum**, then citizens are only enrolled if they follow special **opt-in** instructions.

For more information, please visit [www.pluginillinois.org/MunicipalAggregation.aspx](http://www.pluginillinois.org/MunicipalAggregation.aspx)

## What if I have Questions or Problems?

Customers who need help should contact Illinois Commerce Commission at:

**800-524-0795**

or

[www.icc.illinois.gov/consumer/complaint](http://www.icc.illinois.gov/consumer/complaint)